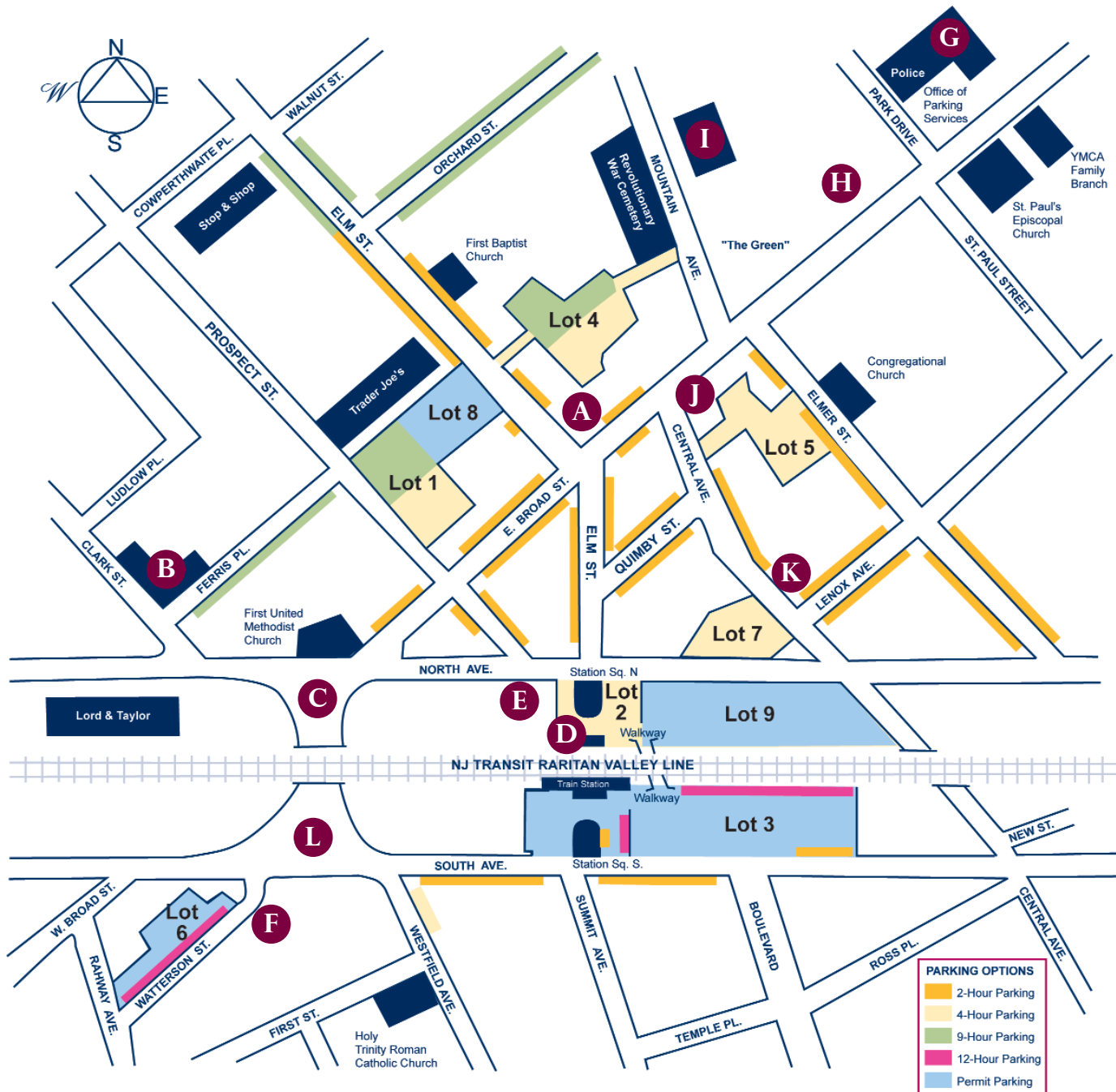


DOWNTOWN WESTFIELD PARKING



Map and Photos courtesy of Downtown Westfield Corporation. Brochure Design by Beth Brenner

A



Arcanum Hall

B



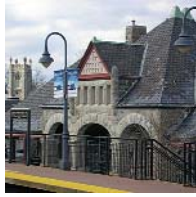
YMCA

C



Memorial Plaza

D



United Way

E



Fire Station

F



Rescue Squad

G



Town Hall

H



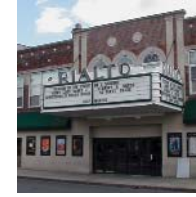
Mindowaskin Park

I



Presbyterian Church

J



Rialto Theater

K



Post Office

L



Westfield Circle

THE BREAKDOWN

Lot #1

62 – four hour spaces

61 – nine hour spaces

Lot #2

71 – four hour spaces

Lot #3

22 – two hour spaces, 70 – 12 hour spaces

460 permit spaces

Lot #4

71 – four hour spaces

71 – nine hour spaces

Lot #5

111 – four hour spaces

Lot #6

104 commuter permit spaces

Lot #7

79 – four hour spaces

Lot #8

85 Downtown business owner and employee permit spaces

Lot #9

189 Downtown business owner and employee permit spaces

*Four and nine hour parking spaces in pay station parking lots have been differentiated by white and yellow numbers respectively.



Permit parking spots are available to resident commuters, business owners and employees.

COMMUTER PERMIT PARKING

- Southside Train Station (Lot #3) – \$576 annually and \$360 semi-annually.
- Watterson Street (Lot #6) – \$360 annually and \$180 semi-annually.
- Prorated rates based on month purchased.
- Waiting list for permits. Contact Office of Parking Services at 789-4044 for details.

EMPLOYEE PERMIT PARKING

- North and Central Avenues (Lot #9) – \$576 annually and \$360 semi-annually.
- Prorated rates based on month purchased.
- Waiting list for permits. Contact Office of Parking Services at 789-4044 for details.

RESIDENTIAL PARKING PERMITS

- Certain Westfield streets are designated as “Residential Permit Parking Zones”. These streets are marked with signs that restrict general parking. Residents who do not have off-street parking must display special permits to park their cars on these streets. There is a \$10 annual fee (January – December).
- Nite Owl permits (downtown overnight parking) in Lot #4 are \$120 annually and \$60 semi-annually



PURCHASING TOKENS AND PARKING CARDS

Parking tokens and parking cards may be purchased at the Office of Parking Services, 425 East Broad Street. Parking tokens, good for one-hour of parking, can be purchased for 50¢ each. Refillable parking cards may be purchased ranging in value from \$20 up to \$200.

METERED PARKING

For your convenience, there is 10-minutes of **FREE** parking with the push of a button at on-street meters. Metered parking is available for up to two-hours on-street, nine-hours on-street, four-hours in parking lots and nine-hours in parking lots.

Parking meter enforcement is from 9 a.m. – 7 p.m. Monday through Saturday with the exception of the 12-hour Lots #3 and #6. The parking enforcement hours of Lots #3 and #6 are from 5 a.m. – 5 p.m. Please be advised that meter feeding beyond the available time is prohibited at all meters.

Parking pay stations accept coins, dollar bills, parking cards and tokens. Parking meters accept coins, parking cards and tokens. Each 50¢ token provides one-hour of parking. Refillable parking cards may be purchased from \$20 to \$200 at the Office of Parking Services, 425 East Broad Street.

Visitors may park up to four hours (9 a.m. – 7 p.m.) at the following multi-space pay stations:

- Lot #1 (off Prospect Street)
- Lot #2 (North Side Train Station)
- Lot #4 (off Elm St. or Mountain Ave.)
- Lot #5 (off Central Ave. or Elmer Street)
- Lot #7 (across from Post Office)

Visitors may park up to nine hours (9 a.m. – 7 p.m.) at the following multi-space pay stations:

- Lot #1 (off Prospect Street) in yellow numbers
- Lot #4 (off Elm St. or Mountain Ave.) in yellow numbers
- Orchard Street, Ferris Place, Elm Street between Walnut and Orchard (Meters accept quarters only)

Visitors may park up to 12 hours (5 a.m. – 5 p.m.) at the following multi-space pay stations:

- Lot #3 (South Avenue)
- Lot #6 (Watterson Street)

ADDING TIME TO PAY STATIONS

You may add time to your parking space from any pay station in town. Follow instructions on the pay station.

DAILY PARKING PERMITS

Daily parking permits are available on a first-come first-serve basis in Lot #3 for \$5 per day. The parking services officer arrives at 7 a.m. and leaves when the available daily permits are sold.

LOADING ZONES

Loading Zones are located on Prospect Street, Quimby Street, Elm Street, Central Avenue, and East Broad Street.

FREE PARKING OPTIONS

- **FREE** parking in permit spaces after 12:00 p.m. in Lot #3 (South Avenue Train lot) and Lot #6 based on availability.
- **FREE** parking is available on Saturdays in Lots #6, #9, and Lot #3 at non-numbered, non-metered permit spots.
- Employees are encouraged to use the Permit Lots on Saturdays and Sundays.
- Downtown Westfield always offers **FREE** parking in all spaces on Sundays.

ASSISTANCE AND INFORMATION

Office of Parking Services
908-789-4044
parking@wpdnj.org

Office Hours:
Monday through Friday 8:30 a.m. – 4:30 p.m.
Thursday 8:30 a.m. – 8:30 p.m.
Saturday 10:00 a.m. – 2:00 p.m.

PARKING IN DOWNTOWN

Westfield



The Town of Westfield
Office of Parking Services
Police Department
425 East Broad Street
Westfield, NJ 07090
908.789.4044
fax: 908.232.4368

Please Visit the Town's New Website:
www.westfieldnj.gov